

# EDIFICIO A

**Ca' PESCHIERA**  
COMPLESSO RESIDENZIALE & PARCO ARCHEOLOGICO SIROLO

[CAPESCHIERA-SIROLO.IT](http://CAPESCHIERA-SIROLO.IT)

**SOSTENIBILITÀ,  
SICUREZZA  
E COMFORT**

T. 340 2395663

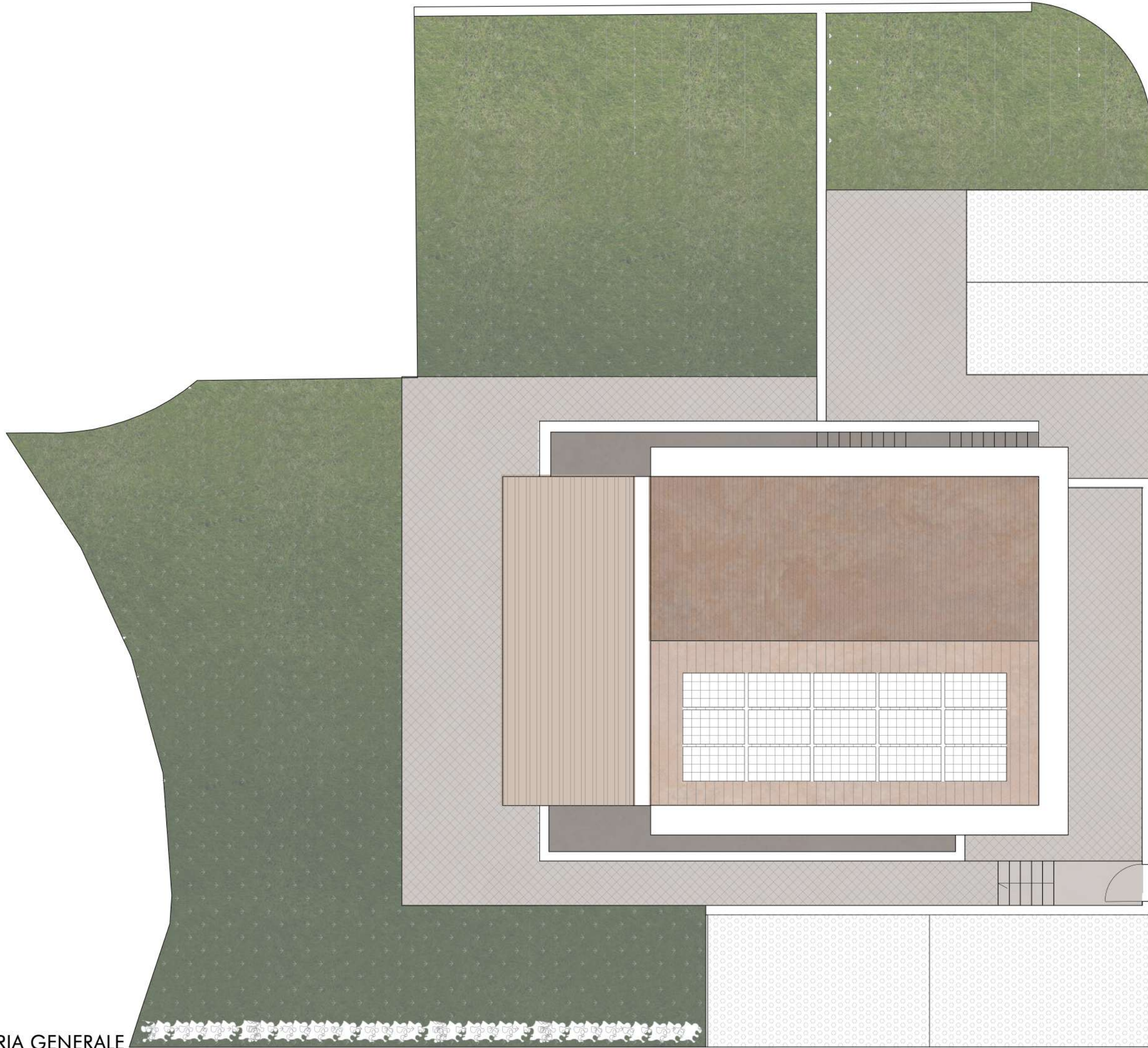
T. 335 7722730

[INFO@CAPESCHIERA-SIROLO.IT](mailto:INFO@CAPESCHIERA-SIROLO.IT)



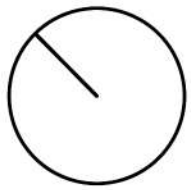
# SOLUZIONE BIFAMILARE



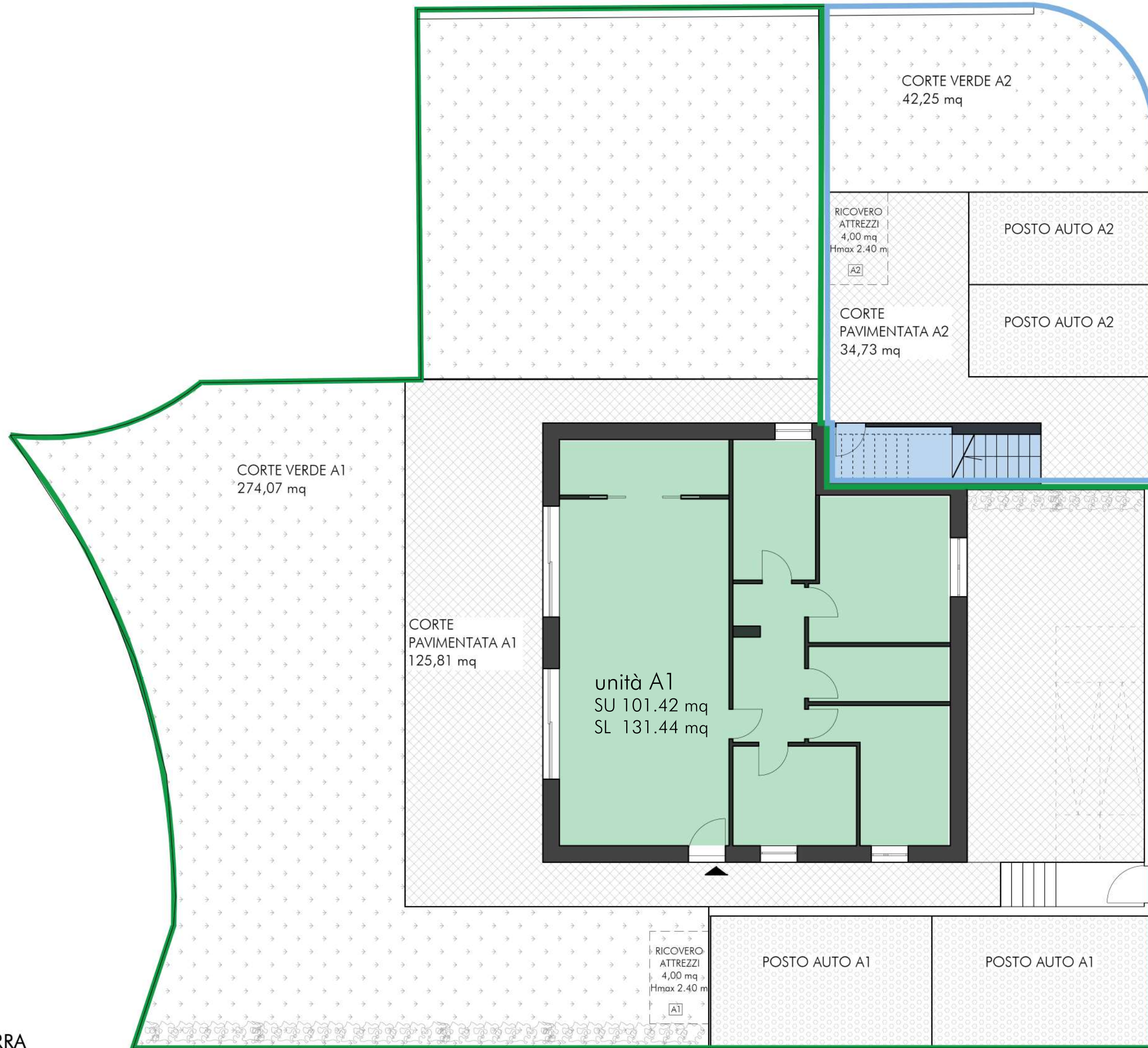


← unità A2

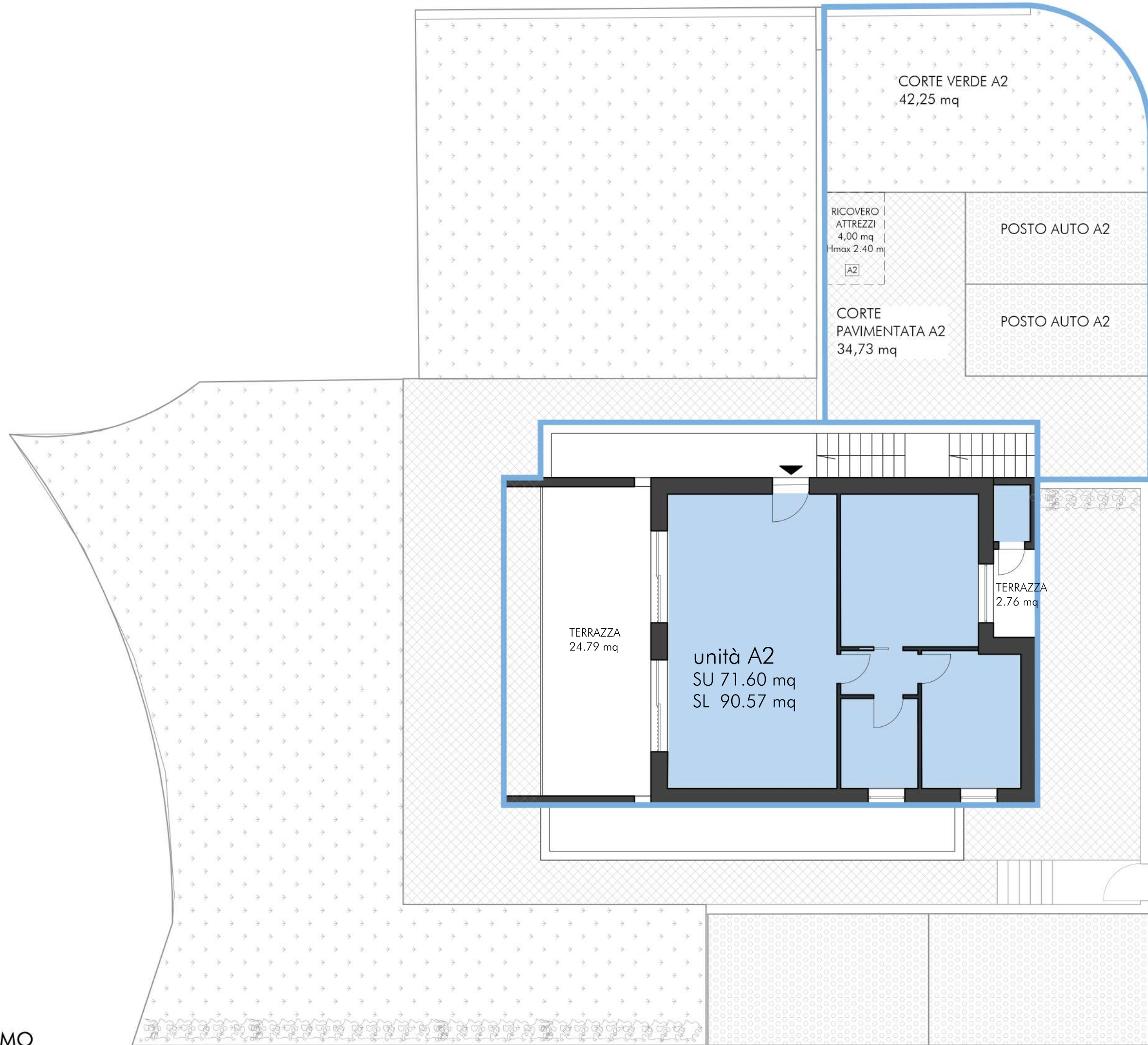
← unità A1





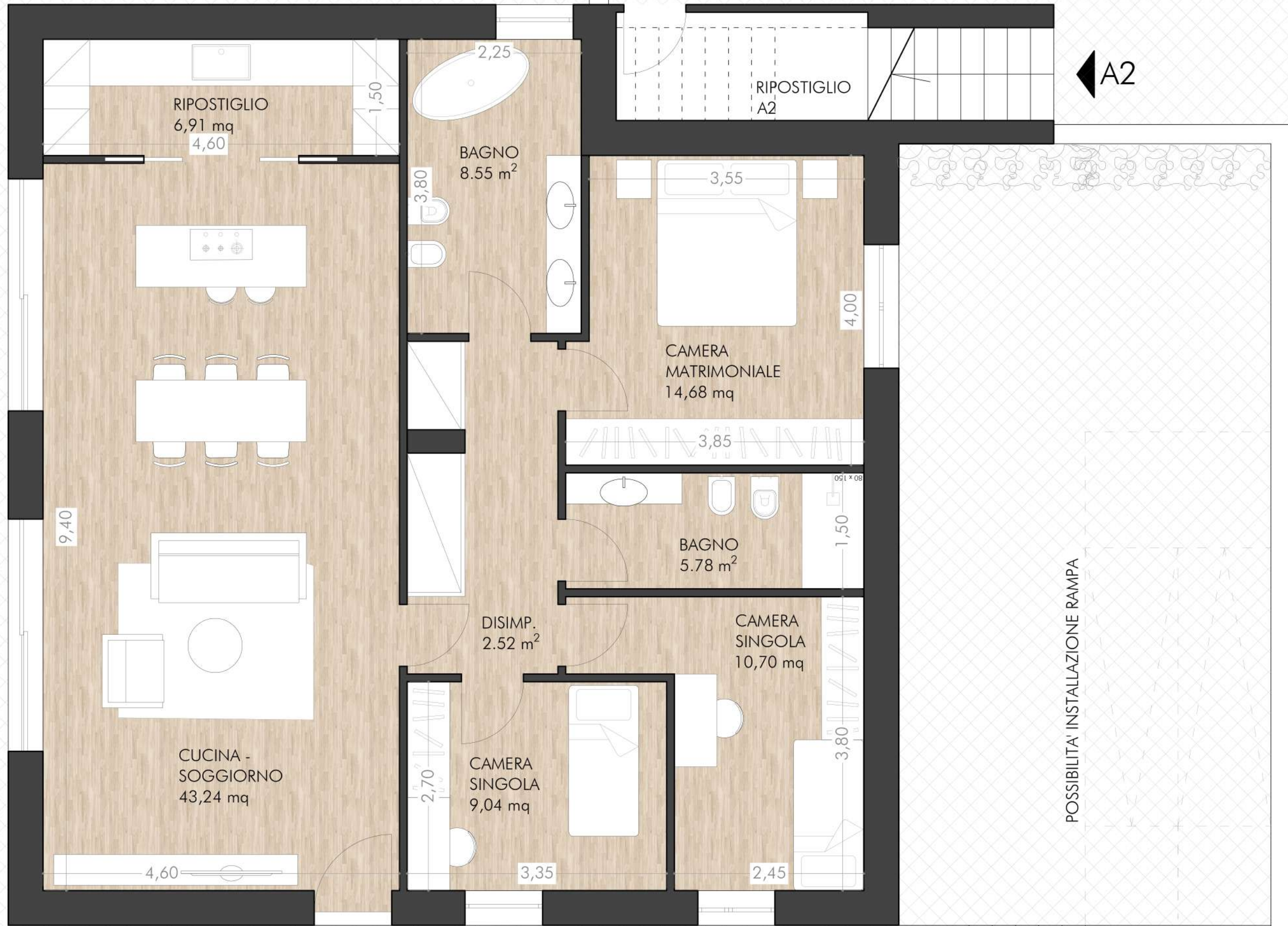








CORTE  
PAVIMENTATA A1  
125,81 mq



POSSIBILITA' INSTALLAZIONE RAMPA

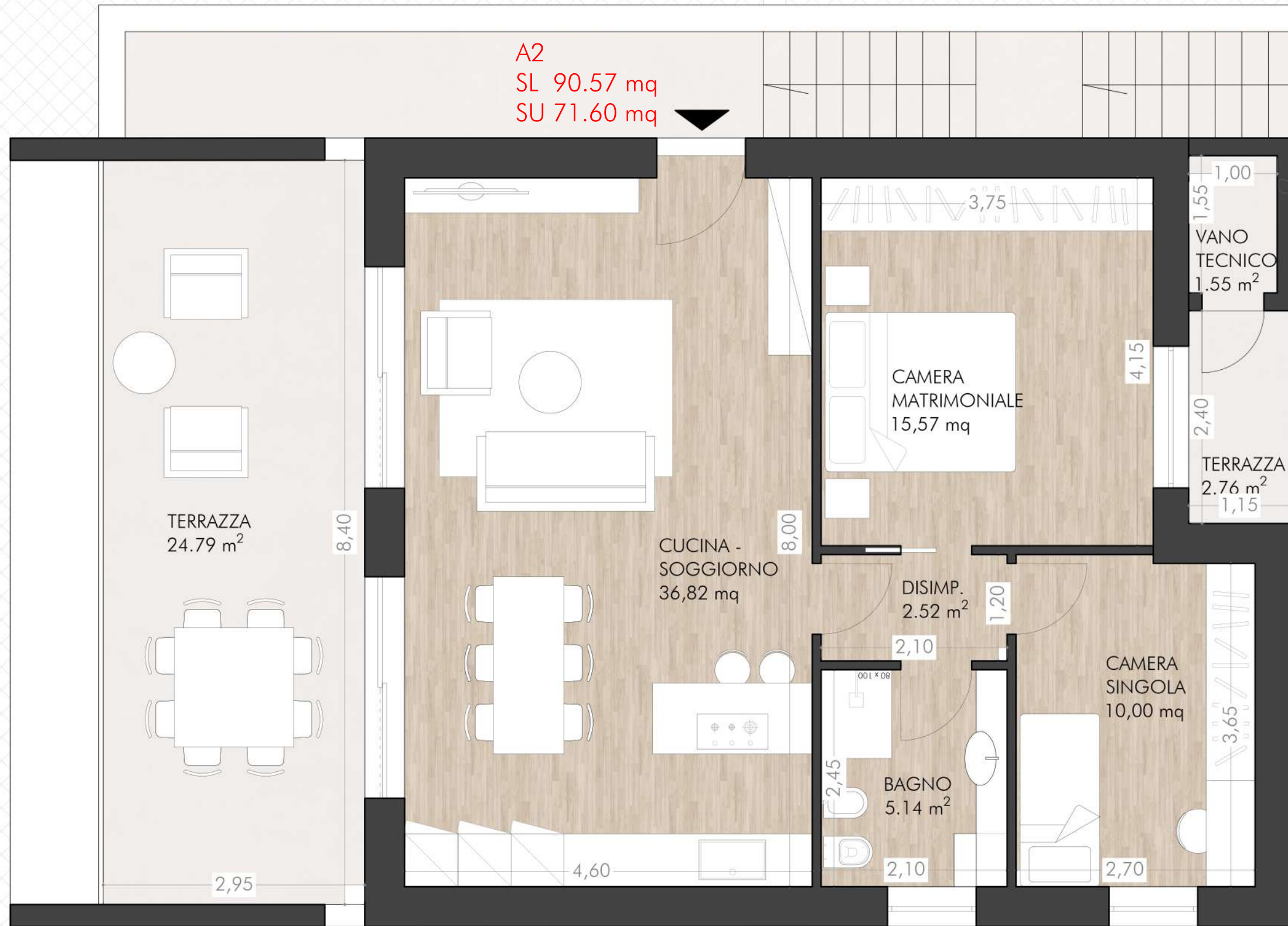
A1  
SL 131.44 mq  
SU 101.42 mq

4

PIANTA PIANO TERRA, Scala 1:50

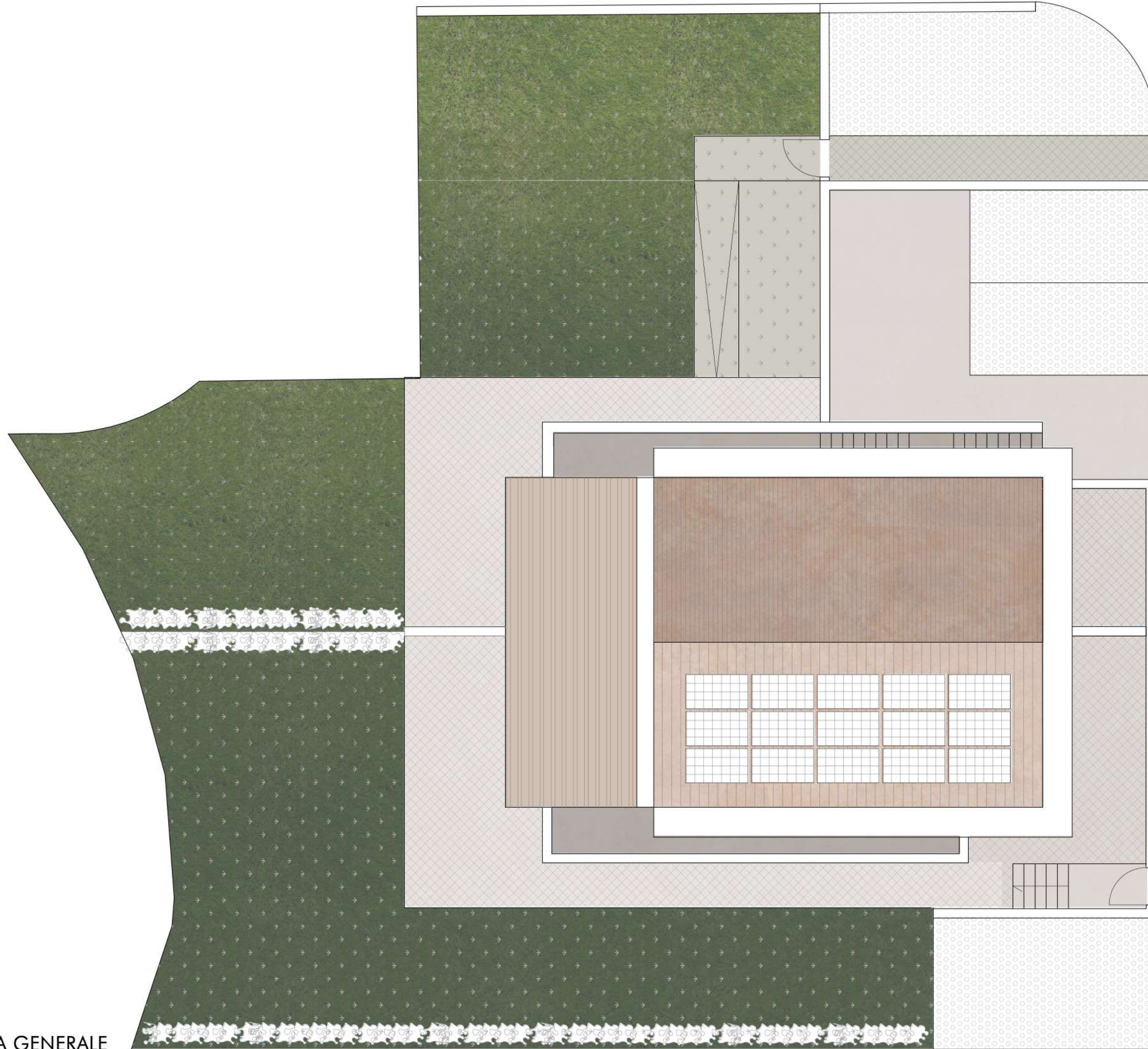


A2  
SL 90.57 mq  
SU 71.60 mq



# SOLUZIONE TRIFAMILARE

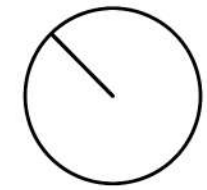




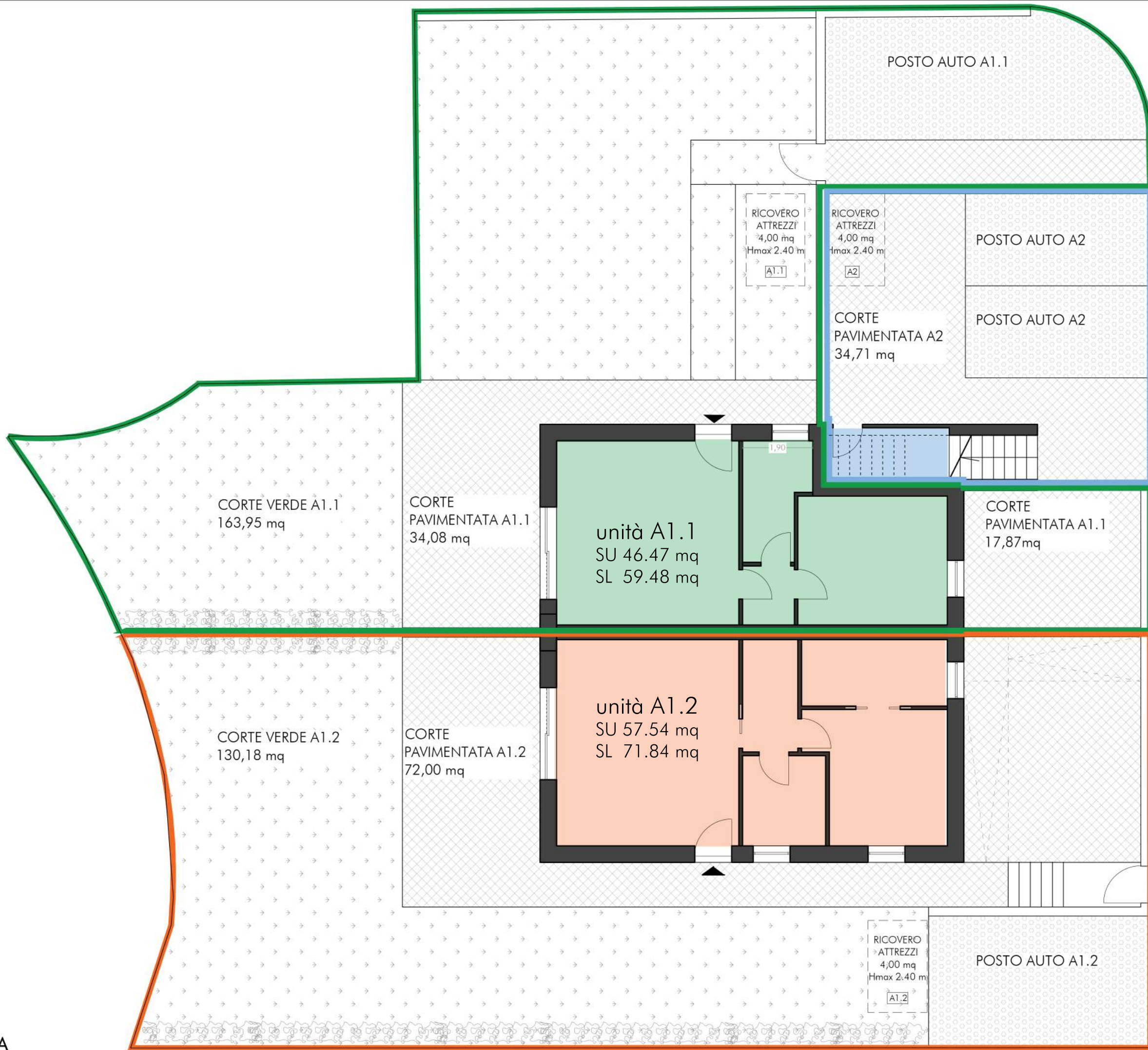
← unità A1.1

← unità A2

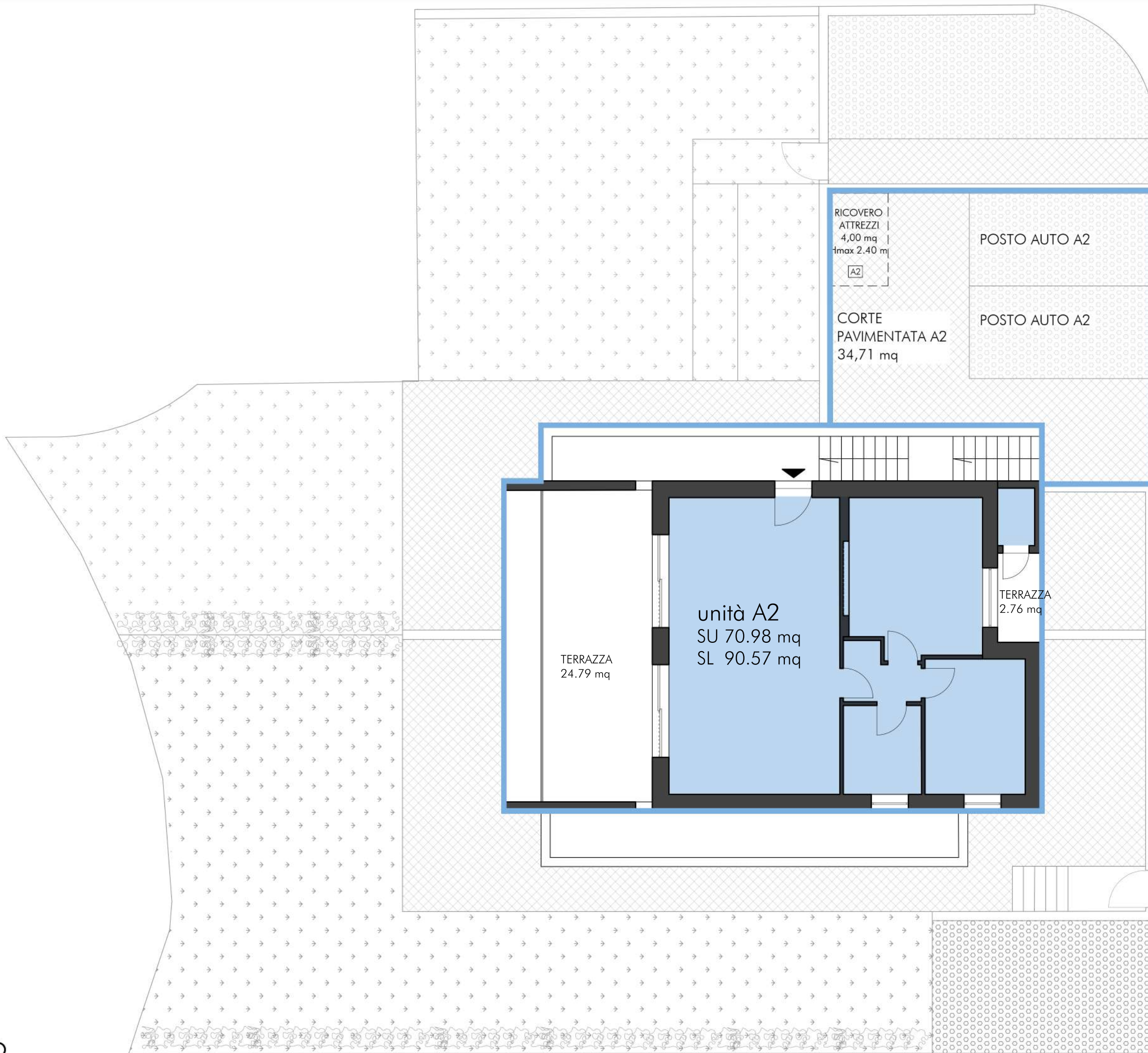
← unità A1.2













CORTE  
PAVIMENTATA A1.1  
10,67 mq

RICOVERO  
ATTREZZI  
4,00 mq  
Hmax 2.40 m

A1.1

RICOVERO  
ATTREZZI  
4,00 mq  
Hmax 2.40 m

A2

POSTO AUTO A2

CORTE  
PAVIMENTATA A2  
34,71 mq

POSTO AUTO A2

A1.1  
SL 59.48 mq  
SU 46.47 mq

RIPOSTIGLIO  
A2

A2

CORTE  
PAVIMENTATA A1.1  
34,08 mq

CUCINA -  
SOGGIORNO  
24,74 mq

BAGNO  
5,32 mq

CAMERA  
MATRIMONIALE  
14,17 mq

CORTE  
PAVIMENTATA A1.1  
17,87 mq

DISIMP.  
2,24 mq





RICOVERO  
 ATTREZZI  
 4,00 mq  
 Hmax 2.40 m

A1.2

POSTO AUTO A1.2

6,00



A2  
SL 90.57 mq  
SU 70.78 mq

